

Albumin

Catalog Number: 26090

Gene Symbol: ALB

Description: Anti-Albumin Mouse Monoclonal Antibody

Background: Albumin belongs to the ALB/AFP/VDB family. It is a soluble, monomeric protein which comprises about one-half of the blood serum protein. Albumin functions primarily as a carrier protein for steroids, fatty acids, and thyroid hormones, and also plays a role in stabilizing extracellular fluid volume. Defects in Albumin will cause familial dysalbuminemic hyperthyroxinemia (FDH).

Immunogen: Albumin protein, human origin.

Tested Applications: ELISA, WB, IHC

Recommended Dilutions:

ELISA: 1:1000-1:5000

WB: 1:1000-1:5000

IHC: 1:50-1:100

Concentration: 1 mg/ml

Host: Mouse

Clonality: Monoclonal

Purity: Purified from ascites

Format: Liquid

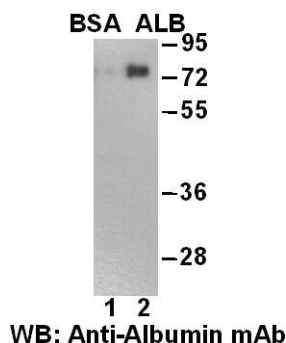
Preservative: No

Constituents: PBS (without Mg²⁺ and Ca²⁺), pH 7.4, 150 mM NaCl, 50% glycerol

Species Reactivity: Anti-Albumin antibody recognizes Albumin from vertebrates. **Storage**

Conditions: Store at -20°C. Avoid freeze / thaw cycles.

Western blot:

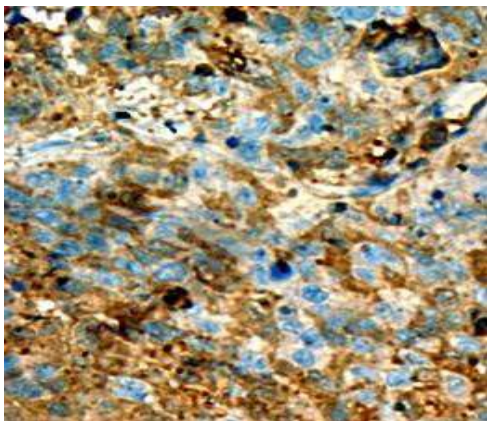


Western blot analysis of HSA (Albumin) and BSA proteins.

Purified Albumin protein (lane 1) and BSA protein (lane 2) were blotted with anti-Albumin monoclonal antibody (Cat. # 26090)

FOR RESEARCH USE ONLY. NOT FOR DIAGNOSTIC APPLICATIONS

Immunohistochemistry:



Immunohistochemical analysis of paraffin-embedded liver cancer tissue with anti-Albumin monoclonal antibody (Cat. # 26090).

Tissue samples were fixed with formaldehyde and blocked with 1% serum for 15min at 37 °C. Antigen retrieval was by heat mediation in citrate buffer (pH6). Samples werethen incubated with primary antibody (1:50) overnight at 4°C . HRP-conjugated Goat anti-mouse IgG (dilution 1:50) was used as secondary antibody.

FOR RESEARCH USE ONLY. NOT FOR DIAGNOSTIC APPLICATIONS